

Suction Trolley System

VRT Series

OPERATING INSTRUCTION

IMPORTANT
PLEASE READ THOROUGHLY
AND FOLLOW DIRECTIONS
CAREFULLY BEFORE OPERATING
EQUIPMENT.



Item no.	1000ml	1500ml	2000ml	3000ml
Reusable Suction Bottle	AC-SJ22	AC-SJ23	AC-SJ21	AC-SJ24
Disposable Liners	RAB-702	RAB-703	RAB-701	RAB-704

INTENDED USE:

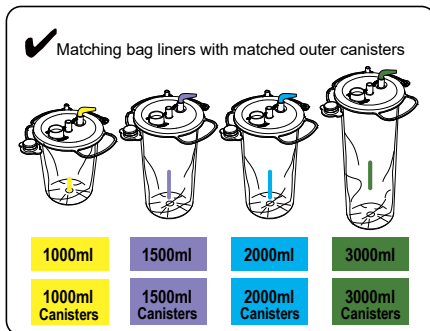
Disposable Bag Liner is intended to be used as a one-off device for collection of medical aspiration of fluid or liquid waste. Intended for use as a temporary storage container for secretions or fluids removed from the body. These fluids or secretions may come from the patient's lungs, stomach or wounds.

PRECAUTIONS!

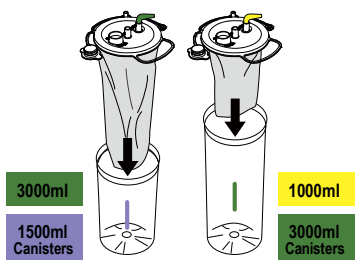
The bag liner must be placed in an upright position. Premature shut-off or inaccurate reading will be resulted if it is tilted.

WARNING!

- Ensure the corresponding bag liner size matches to the outer canister size: 1000 ml (yellow), 1500 ml (purple), 2000 ml (blue), 3000 ml (green). The pre-packed bag liner + elbow connector is color coded to match the respective outer canisters. Bag liners will not function if incorrectly installed.
- After extending the bag liner, with the lengths pre-folded is important to avoid the bag's surface from laying against the inner wall of the outer canister. This may cause a deformation of the bag liner during suction. Do not twist and turn the bag during insertion.
- Press down on the lid thoroughly to ensure proper suction.
- All caps, tubes should be tightly attached fitted to avoid loss of suction or accidental removal which will cause spillage and contamination.
- Do not attempt to open the "ORTHO / TANDEM" port when the liner is full and inflated.
- Bag liner is intended for single use only. Do not re-use or attempt to sterilize for re-use.
- Do not exceed the vacuum pressure of 80 kPa (600 mmHg).
- It is not recommended for pleural drainage.
- Outer Canisters are reusable and non-sterile products.



X Bag liners will not function if incorrectly installed.



CAUTION!

Federal law restricts this device to sale or use by or on the order of a physician (properly licensed practitioner).

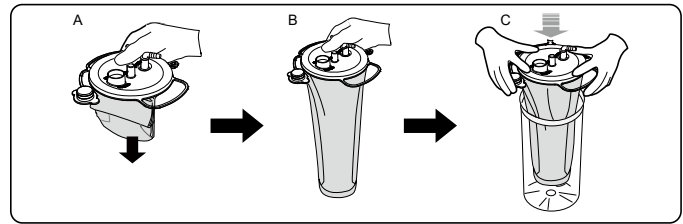
SINGLE USE

Instructions for **outer canister installation**:

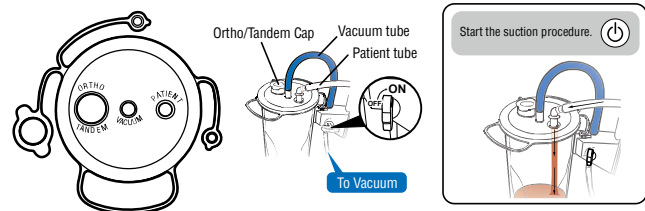
- Place outer canister's bracket on **wall hanger, wall adaptor (SR), roller stand or mini stand**.
- Connect suction tube from the regulator on the wall to the connection tube of the underside of the bracket.
- Turn the on-off valve to the "ON" position.

Assembly Procedure for **single bag liner/outer canister**:

- Unpack the bag liner package. Extend the liner, and insert it into the corresponding outer canister. Press down on the lid thoroughly, so it is firmly sealed.



- Assemble the **blue vacuum tube** from the outer canister to the "VACUUM" port on the lid of the bag liner.
- Connect the Patient Tube to the "PATIENT" port. Use the **elbow connector** in case the diameter of the tube does not fit.
- Cap the "ORTHO / TANDEM" port firmly.
- Start the suction procedure.



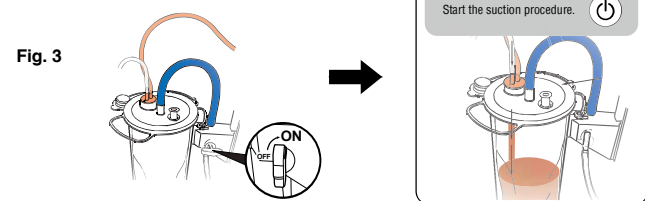
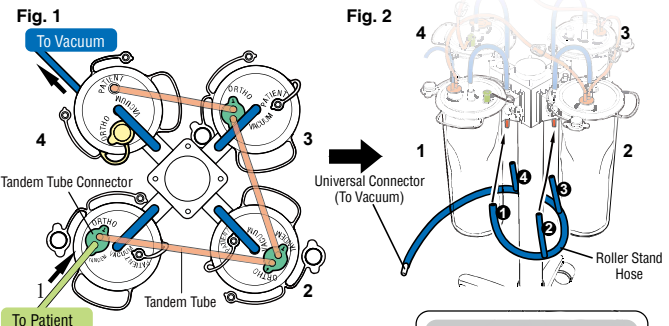
TANDEM USE

Assembly Procedure for connecting **multiple bag liners/outer canisters (Tandem connection)**

WARNING!

- Check that the clip on the tandem tube is in the open position before starting suction procedure.

- Unpack the bag liner package. Extend the liner and insert it into the corresponding outer canister. Press down on the lid thoroughly, so it is firmly sealed.
- Assemble the **blue vacuum tube** on the outer canister to the "VACUUM" port on the lid of the bag liner (repeat for 4x canisters).
- Attach the **Tandem Tube Connector** into the "ORTHO / TANDEM" port (repeat for 3x canisters). Attach the Tandem Tube (engraved "T") from the 1st canister to the 2nd canister's tandem connector (engraved "↑") (repeat for 2nd to 3rd canister). From the 3rd to 4th canister, connect the Tandem Tube to the patient port (see Fig. 1).
- Close the "ORTHO" port of the last bag liner. (To Vacuum)
- In the 1st canister, connect the Patient Tube to the Tandem Tube Connector engraved "↑" (To Patient). Close the "PATIENT" port with the cap.
- Install the **roller stand hose** as shown. Note the universal connector side is to the vacuum source (see Fig. 2).
- Turn all on-off valve on the canisters to the "ON" position.
- Start the suction procedure.

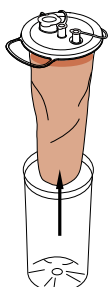
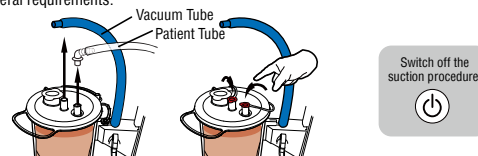


WARNING!

- Ensure the vacuum source remain on and running before disposal. If there is a power outage, turn the ON/OFF switch to "OFF" and do not remove the VACUUM tube.
- Ensure that the clip on the Tandem Tube is not accidentally opened where applicable.

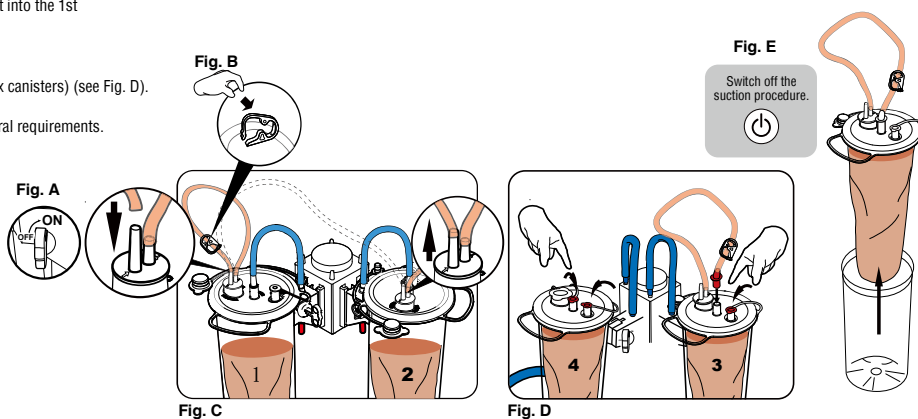
DISPOSAL PROCEDURE OF SINGLE CANISTER:

- Disconnect the Patient Tube and cap the "PATIENT" port
- Disconnect the Vacuum Tube and cap the "VACUUM" port. Make sure all ports are closed and sealed.
- Turn off vacuum source.
- Dispose of the bag liner in compliance with your local, state and federal requirements.



DISPOSAL PROCEDURE OF TANDEM SYSTEM:

1. Ensure 4x on-off valves are in the "ON" position for all canisters (see Fig. A).
2. Close the white clip on all tandem tubes for all canisters (see Fig. B).
3. Starting with the 2nd canister, remove the Tandem Tube and re-plug it into the 1st canister's Patient Tube's Connector (engraved "↑") (see Fig. C).
4. Repeat step 3 for the 3rd to 2nd canister and the 4th to 3rd canister.
5. For the 4th canister, plug the "PATIENT" port.
6. Disconnect the blue vacuum tube from the "VACUUM" port (repeat 4x canisters) (see Fig. D).
7. Turn off vacuum source (see Fig. E).
8. Dispose of the bag liner in compliance with your local, state and federal requirements.



MEDIPRO

Villapark Business Park, Av Quitapesares 8
Building 8, Villaviciosa de Odon (Madrid) 28670
Spain

ACARE

Acare Technology Co., Ltd

6F.-3, No.24, Wuquan 2nd Rd.,Xinzhuang Dist., New Taipei City 242 Taiwan
TEL: +886-2-2298-8170 FAX: +886-2-2298-8560
<http://www.acaretech.com>



Single use

NON STERILE

LATEX · FREE

